

PRODUCT MONOGRAPH  
INCLUDING PATIENT MEDICATION INFORMATION

**PrDILANTIN® INFATABS**

Phenytoin Chewable Tablets  
chewable tablets, 50 mg, oral  
USP

**PrDILANTIN® - 30 SUSPENSION**

**PrDILANTIN® - 125 SUSPENSION**

Phenytoin Oral Suspension  
solutions, 30 mg / 5 mL and 125 mg / 5 mL, oral  
USP

Anticonvulsant

Upjohn Canada ULC  
17300, Trans-Canada Highway  
Kirkland, Quebec  
H9J 2M5

Submission Control Number: 256638

Date of Initial Authorization:  
January 1, 1953  
Date of Revision:  
March 31, 2022

® Viatris Specialty LLC  
Upjohn Canada ULC, Licensee  
© Upjohn Canada ULC, 2022

## RECENT MAJOR LABEL CHANGES

|  |  |
|--|--|
| None at the time of most recent authorization. |  |
|--|--|

## TABLE OF CONTENTS

Sections or subsections that are not applicable at the time of authorization are not listed.

|   |           |
|---|-----------|
| <b>RECENT MAJOR LABEL CHANGES .....</b>                           | <b>2</b>  |
| <b>TABLE OF CONTENTS .....</b>                                    | <b>2</b>  |
| <b>PART I: HEALTH PROFESSIONAL INFORMATION .....</b>              | <b>4</b>  |
| <b>1 INDICATIONS.....</b>   | <b>4</b>  |
| 1.1 Pediatrics.....   | 4         |
| 1.2 Geriatrics.....   | 4         |
| <b>2 CONTRAINDICATIONS.....</b>                                   | <b>4</b>  |
| <b>4 DOSAGE AND ADMINISTRATION.....</b>                           | <b>4</b>  |
| 4.1 Dosing Considerations .....                                   | 4         |
| 4.2 Recommended Dose and Dosage Adjustment .....                  | 5         |
| 4.5 Missed Dose .....   | 6         |
| <b>5 OVERDOSAGE.....</b>  | <b>6</b>  |
| <b>6 DOSAGE FORMS, STRENGTHS, COMPOSITION AND PACKAGING .....</b> | <b>7</b>  |
| <b>7 WARNINGS AND PRECAUTIONS.....</b>                            | <b>8</b>  |
| 7.1 Special Populations.....                                      | 15        |
| 7.1.1 Pregnant Women.....   | 15        |
| 7.1.2 Breast-feeding.....   | 16        |
| 7.1.4 Geriatrics.....   | 16        |
| <b>8 ADVERSE REACTIONS.....</b>                                   | <b>16</b> |
| 8.1 Adverse Reaction Overview .....                               | 16        |
| 8.5 Post-Market Adverse Reactions.....                            | 16        |
| <b>9 DRUG INTERACTIONS .....</b>                                  | <b>18</b> |
| 9.1 Serious Drug Interactions .....                               | 18        |
| 9.2 Drug Interactions Overview .....                              | 18        |
| 9.3 Drug-Behavioural Interactions.....                            | 18        |

|           |  |           |
|-----------|--|-----------|
| 9.4       | Drug-Drug Interactions .....                 | 18        |
| 9.5       | Drug-Food Interactions .....                 | 25        |
| 9.6       | Drug-Herb Interactions .....                 | 25        |
| 9.7       | Drug-Laboratory Test Interactions.....       | 25        |
| <b>10</b> | <b>CLINICAL PHARMACOLOGY.....</b>            | <b>25</b> |
| 10.1      | Mechanism of Action .....                    | 25        |
| 10.3      | Pharmacokinetics.....                        | 25        |
| <b>11</b> | <b>STORAGE, STABILITY AND DISPOSAL.....</b>  | <b>27</b> |
| <b>12</b> | <b>SPECIAL HANDLING INSTRUCTIONS.....</b>    | <b>27</b> |
|           | <b>PART II: SCIENTIFIC INFORMATION .....</b> | <b>28</b> |
| <b>13</b> | <b>PHARMACEUTICAL INFORMATION .....</b>      | <b>28</b> |
| <b>14</b> | <b>CLINICAL TRIALS .....</b>                 | <b>28</b> |
| <b>15</b> | <b>MICROBIOLOGY .....</b>                    | <b>28</b> |
| <b>16</b> | <b>NON-CLINICAL TOXICOLOGY .....</b>         | <b>28</b> |
|           | <b>PATIENT MEDICATION INFORMATION .....</b>  | <b>29</b> |

## PART I: HEALTH PROFESSIONAL INFORMATION

### 1 INDICATIONS

DILANTIN INFATABS (phenytoin chewable tablets), DILANTIN-30 SUSPENSION and DILANTIN-125 SUSPENSION (phenytoin oral suspensions) are indicated for:

- the control of generalized tonic-clonic (grand mal) and complex partial (psychomotor, temporal lobe) seizures.

Phenytoin is not effective for absence (petit mal) seizures, and not indicated for seizures due to hypoglycemic or other metabolic causes.

#### 1.1 Pediatrics

Pediatrics (< 18 years of age): See [4.2 Recommended Dose and Dosage Adjustments, Pediatrics](#).

#### 1.2 Geriatrics

Evidence from clinical studies and experience suggests that use in the geriatric population is associated with differences in safety or effectiveness. See [4.2 Recommended Dose and Dosage Adjustments, Geriatrics](#).

### 2 CONTRAINDICATIONS

Phenytoin is contraindicated in:

- Patients who are hypersensitive to phenytoin, other hydantoin, or any ingredient in the formulation, including any non-medicinal ingredient, or component of the container. For a complete listing, see [6 DOSAGE FORMS, STRENGTHS, COMPOSITION AND PACKAGING](#); and [7 WARNINGS AND PRECAUTIONS, Hypersensitivity](#); and [Skin](#).
- Patients being treated with delavirdine (a non-nucleoside reverse transcriptase inhibitor). See [9.4 Drug-Drug Interactions](#).
- Patients who currently suffer from sick sinus syndrome, sinus bradycardia, sinoatrial block, second- and third-degree atrioventricular (A-V) block, QT interval prolongation, Adams-Stokes syndrome, or other heart rhythm disorders. This is due to the effect of phenytoin on ventricular automaticity. See [7 WARNINGS AND PRECAUTIONS, Cardiovascular](#); and [5 OVERDOSAGE](#).

### 4 DOSAGE AND ADMINISTRATION

#### 4.1 Dosing Considerations

**Dosage should be individualized** to provide maximum benefit. There may be wide interpatient variability in phenytoin serum levels with equivalent dosages.

Phenytoin is highly bound to plasma protein and is subject to saturable metabolism. Consequently:

- small dose increases may substantially raise serum phenytoin concentration (and risk of

toxicity), when levels are already in or above the upper therapeutic range; and

- phenytoin is subject to many drug interactions, which may increase serum concentrations.

See [10.3 Pharmacokinetics](#); and [9 DRUG INTERACTIONS](#).

**Serum blood level determinations may be necessary** for optimal dosage adjustments. The clinically effective serum level is usually 40-80 micromol/L (10-20 mcg/mL). Serum blood level determinations are especially helpful when:

- drug or other interactions are suspected;
- treating geriatric patients;
- patients have renal or hepatic impairment, or hypoalbuminemia, or hyperbilirubinemia (in which case unbound phenytoin levels should be monitored). See [4.2 Renal or Hepatic Disease](#).

**Switch carefully between sodium salt and free acid phenytoin products.** Because there is approximately an 8% increase in drug content with the free acid form over that of the sodium salt, dosage adjustments may be necessary and serum phenytoin concentrations should be monitored when switching between free acid and sodium salt formulations.

- The sodium salt of phenytoin is used in DILANTIN extended capsules.
- The free acid form of phenytoin is used in DILANTIN-30 SUSPENSION, DILANTIN-125 SUSPENSION and DILANTIN INFATABS.
- DILANTIN SUSPENSIONS ARE FOR ORAL USE, NOT PARENTERAL USE.

**Phenytoin should not be abruptly discontinued** because of the possibility of increased seizure frequency, including status epilepticus. See [7 WARNINGS AND PRECAUTIONS, General, Withdrawal Precipitated Seizures](#).

#### **4.2 Recommended Dose and Dosage Adjustment**

DILANTIN INFATABS, DILANTIN-30 SUSPENSION and DILANTIN-125 SUSPENSION are not for once-a-day dosing.

With recommended dosage, a period of 7 to 10 days may be required to achieve therapeutic blood levels with DILANTIN INFATABS, DILANTIN-30 SUSPENSION and DILANTIN-125 SUSPENSION and changes in dosage (increase or decrease) should not be carried out at intervals shorter than 7 to 10 days.

- **Adults**

Patients who have received no previous treatment may be started on 2 DILANTIN INFATABS 3 times daily or on 1 teaspoonful (5 mL) of DILANTIN-125 SUSPENSION 3 times daily, and the dose then adjusted to suit individual requirements. For some adults, the satisfactory maintenance dosage will be 8 DILANTIN INFATABS daily; an increase to 12 DILANTIN INFATABS may be made, if necessary. With DILANTIN-125 SUSPENSION, an increase to 5 teaspoonfuls (25 mL) daily may be made if necessary.

- **Pediatrics (< 18 years of age)**

Initially, 5 mg/kg/day of DILANTIN INFATABS, DILANTIN-30 SUSPENSION or DILANTIN-125 SUSPENSION may be given in 2 or 3 equally divided doses, with subsequent dosage individualized to a maximum of 300 mg daily. A recommended daily maintenance dosage is usually 4 to 8 mg/kg. Children over 6 years may require the minimum adult dose (300 mg/day). If the daily dosage cannot be divided equally, the larger dose should be given at bedtime.

- **Geriatrics (> 65 years of age)**

Phenytoin clearance is decreased slightly in elderly patients. Lower doses than the doses recommended for adults may be required when initiating treatment. Phenytoin dosing requirements are highly variable and must be individualized (see [10.3 Pharmacokinetics, Geriatrics](#)).

- **Renal or Hepatic Disease**

In patients with renal or hepatic impairment or in those with hypoalbuminemia, plasma levels of unbound phenytoin are elevated. **Unbound** phenytoin concentrations may be more useful in these patient populations. This finding should be considered during therapeutic monitoring and following phenytoin serum level determinations, which may be necessary for optimal dosage adjustment (see [4.1 Dosing Considerations](#); and [7 WARNINGS AND PRECAUTIONS, Hepatic/Biliary/Pancreatic](#) and [Renal](#)).

#### **4.5 Missed Dose**

The patient/caregiver should be advised that if a dose is missed, the missed dose should be taken as soon as it is remembered. If it is almost time for the next dose, the missed dose should not be taken. Instead, take the next scheduled dose. The patient/caregiver should be advised to not to make up for a missed dose by taking a double dose next time.

### **5 OVERDOSAGE**

The lethal dose of DILANTIN INFATABS, DILANTIN-30 SUSPENSION and DILANTIN-125 SUSPENSION in pediatric patients is not known. The lethal dose of phenytoin in adults is estimated to be 2 to 5 grams. The initial symptoms are nystagmus, ataxia, and dysarthria. Other signs are tremor, hyperreflexia, somnolence, drowsiness, lethargy, slurred speech, blurred vision, nausea, vomiting. The patient may become comatose and hypotensive. Bradycardia and asystole/cardiac arrest have been reported (see [7 WARNINGS AND PRECAUTIONS, Cardiac effects](#)). Death is due to respiratory and circulatory depression.

There are marked variations among individuals with respect to phenytoin plasma levels where toxicity may occur. Nystagmus on lateral gaze, usually appears at 80 micromol/L (20 mcg/mL), ataxia at 119 micromol/L (30 mcg/mL). Dysarthria and lethargy appear when the serum concentration is > 159 micromol/L (40 mcg/mL), but a concentration as high as 198 micromol/L (50 mcg/mL) has been reported without evidence of toxicity. As much as 25 times the therapeutic dose has been taken to result in a serum concentration over > 396 micromol/L (100 mcg/mL) with complete recovery. Irreversible cerebellar dysfunction and atrophy have been reported.

## Treatment and Management

Treatment is nonspecific since there is no known antidote.

The adequacy of the respiratory and circulatory systems should be carefully observed and appropriate supportive measures employed. Hemodialysis can be considered since phenytoin is not completely bound to plasma proteins. Total exchange transfusion has been used in the treatment of severe intoxication in pediatric patients.

In acute overdosage the possibility of the presence of other CNS depressants, including alcohol, should be kept in mind.

For management of a suspected drug overdose, contact your regional poison control centre.

## 6 DOSAGE FORMS, STRENGTHS, COMPOSITION AND PACKAGING

**Table – Dosage Forms, Strengths, Composition and Packaging**

| Route of Administration | Dosage Form / Strength/Composition   | Non-medicinal Ingredients  |
|-------------------------|--|--|
| Oral                    | Chewable tablets of 50 mg phenytoin (free base form)   | Alcohol, magnesium stearate, spearmint oil, sugar and talc.  |
| Oral                    | Suspensions containing phenytoin (free base form): <ul style="list-style-type: none"><li>• 30 mg / 5 mL,</li><li>• 125 mg / 5 mL</li></ul> | Alcohol, banana oil, citric acid, glycerin, magnesium aluminium silicate, orange oil, polysorbate 40, Red #2 FD&C (30 mg/5 mL suspension only), sodium benzoate, sodium carboxymethylcellulose, sugar, vanillin, yellow #6 FD&C and water. |

DILANTIN INFATABS: Flavoured, triangular shaped, grooved chewable tablets, bottles of 100.

DILANTIN-30 SUSPENSION: Flavoured and coloured (red) oral suspension, bottles of 250 mL.

DILANTIN-125 SUSPENSION: Flavoured and coloured (orange) oral suspension, bottles of 250 mL.

Also available as phenytoin sodium in DILANTIN extended capsules:

- 30 mg: A size 4 hemispherical Coni Snap capsule with a white opaque body and pale pink opaque cap containing a white powder. Capsule is imprinted with black rectified radial print, “PD” on cap and “DILANTIN 30 mg” on body. Bottles of 100.
- 100 mg: Hard, filled No. 3, capsules containing a white powder. The medium orange cap having the Parke-Davis logo printed in black ink and the white, opaque, body having “DILANTIN” over “100 mg” printed in black ink. Bottles of 100 and 1000.

## 7 WARNINGS AND PRECAUTIONS

### General

**Withdrawal Precipitated Seizure:** DILANTIN INFATABS, DILANTIN-30 SUSPENSION or DILANTIN-125 SUSPENSION should not be abruptly discontinued because of the possibility of increased seizure frequency, including status epilepticus. When, in the judgment of the clinician, the need for dosage reduction, discontinuation, or substitution of alternative anticonvulsant medication arises, this should be done gradually. However, in the event of an allergic hypersensitivity reaction, rapid substitution of alternative therapy may be necessary. In this case, alternative therapy should be an anticonvulsant drug which does not belong to the hydantoin chemical class.

Acute alcoholic intake may increase phenytoin serum levels while chronic alcoholic use may decrease serum levels.

Phenytoin is **not indicated for:**

- Seizures due to hypoglycemic or other metabolic causes. Appropriate diagnostic procedures should be performed as indicated.
- Absence (petit mal) seizures. If tonic-clonic (grand mal) and absence (petit mal) seizures are present, combined drug therapy is needed.

**Slow metabolizers:** A small percentage of individuals who have been treated with phenytoin have been shown to metabolize the drug slowly. Slow metabolism may be due to limited enzyme availability and lack of induction; it appears to be genetically determined.

### Information for Patients and Caregivers

Patients and caregivers should be advised to read the Patient Medication Information for DILANTIN INFATABS, DILANTIN-30 SUSPENSION and DILANTIN-125 SUSPENSION prior to use. Patients receiving DILANTIN INFATABS, DILANTIN-30 SUSPENSION or DILANTIN-125 SUSPENSION, and caregivers, should be given the following instructions by the physician and pharmacist:

1. Patients taking phenytoin should be advised of the importance of adhering strictly to the prescribed dosage regimen, and of informing their physician of any clinical condition in which it is not possible to take the drug orally as prescribed, e.g., surgery, etc.
2. Patients should be advised of the early toxic signs and symptoms of potential hematologic, dermatologic, hypersensitivity, or hepatic reactions. These symptoms may include, but are not limited to, fever, sore throat, rash, ulcers in the mouth, easy bruising, lymphadenopathy and petechial or purpuric hemorrhage, and in the case of liver reactions, anorexia, nausea/vomiting, or jaundice. The patient should be advised that, because these signs and symptoms may signal a serious reaction, that they must report any occurrence immediately to a physician. In addition, the patient should be advised that these signs and symptoms should be reported even if mild or when occurring after extended use. Patients should also be advised that a history of hypersensitivity reactions with other antiepileptic drugs may be a risk for developing reactions with phenytoin (see [7 WARNINGS AND PRECAUTIONS](#),



[Hematologic](#); [7 WARNINGS AND PRECAUTIONS, Immune](#); [7 WARNINGS AND PRECAUTIONS, Skin](#); and [7 WARNINGS AND PRECAUTIONS, Hepatic/Biliary/Pancreatic](#)).

3. Patients should be cautioned on the use of other drugs or alcoholic beverages without first seeking the physician's advice (see [9 DRUG INTERACTIONS](#)).
4. Patients should be instructed to call their physician if skin rash develops.
5. The importance of good dental hygiene should be stressed in order to minimize the development of gingival hyperplasia and its complications.
6. Patients, their caregivers, and families should be counseled that antiepileptic drugs, including DILANTIN INFATABS, DILANTIN-30 SUSPENSION and DILANTIN-125 SUSPENSION, may increase the risk of suicidal thoughts and behavior and should be advised of the need to be alert for the emergence or worsening of symptoms of depression, any unusual changes in mood or behavior, or the emergence of suicidal thoughts, behavior, or thoughts about self-harm. Behaviors of concern should be reported immediately to healthcare providers (see [7 WARNINGS AND PRECAUTIONS, Psychiatric](#)).
7. Women of child-bearing potential should be warned to consult their physician regarding the discontinuation of the drug due to the potential hazards to themselves and to the fetus if they are pregnant or intend to become pregnant (see [7.1.1 Pregnant Women](#) and [7.1.2 Breast-feeding](#)).
8. Patients who become pregnant should be encouraged to enroll in the North American Antiepileptic Drug (NAAED) Pregnancy Registry. This registry is collecting information about the safety of antiepileptic drugs during pregnancy. To enroll, patients themselves must call the toll free number 1-888-233-2334. Registry information can also be obtained from the Internet at [www.aedpregnancyregistry.org/](http://www.aedpregnancyregistry.org/) (see [7.1.1 Pregnant Women](#) and [7.1.2 Breast-feeding](#)).

### **Carcinogenesis and Mutagenesis**

See [7 WARNINGS AND PRECAUTIONS, Hematopoietic](#) and [7.1.1 Pregnant Women](#).

### **Cardiovascular**

#### **Cardiac Effects**

Cardiac-related adverse events have been reported in association with therapeutic and supratherapeutic levels of phenytoin in patients with or without history of cardiac disease or comorbidities and with or without other medications present. These reactions occurred in all age groups and included bradycardia, ventricular tachycardia, cardiac arrest, and death. In a number of cases, patients recovered following phenytoin dose reduction or discontinuation. Patients with any underlying cardiac conditions should be evaluated on an individual basis, and potential benefits of phenytoin treatment should be assessed against its potential risks (see [2 CONTRAINDICATIONS](#), [5 OVERDOSAGE](#)).

#### **Driving and Operating Machinery**

Patients should be advised not to drive or operate complex machinery or engage in other

hazardous activities until they have gained sufficient experience on phenytoin to gauge whether or not it affects their mental and/or motor performance adversely.

## **Endocrine and Metabolism**

### **Porphyria**

In view of isolated reports associating phenytoin with exacerbation of porphyria, caution should be exercised in using this medication in patients suffering from this disease.

### **Hyperglycemia**

Hyperglycemia, resulting from the drug's inhibitory effects on insulin release, has been reported. Phenytoin may also raise the serum glucose level in diabetic patients.

## **Hematologic**

### **Hematopoietic**

Hematopoietic complications, some fatal, have occasionally been reported in association with administration of phenytoin. These have included thrombocytopenia, leukopenia, granulocytopenia, agranulocytosis, and pancytopenia with or without bone marrow suppression.

There have been a number of reports suggesting a relationship between phenytoin and the development of lymphadenopathy (local or generalized) including benign lymph node hyperplasia, pseudolymphoma, lymphoma, and Hodgkin's Disease. Although a cause and effect relationship has not been established, the occurrence of lymphadenopathy indicates the need to differentiate such a condition from other types of lymph node pathology. Lymph node involvement may occur with or without symptoms and signs resembling DRESS (see [7 WARNINGS AND PRECAUTIONS, Skin](#)). In all cases of lymphadenopathy, follow-up observation for an extended period is indicated and every effort should be made to achieve seizure control using alternative anticonvulsant drugs.

While macrocytosis and megaloblastic anemia have occurred, these conditions usually respond to folic acid therapy. If folic acid is added to phenytoin therapy, a decrease in seizure control may occur.

### **Hepatic/Biliary/Pancreatic**

In patients with hepatic impairment or in those with hypoalbuminemia, there is increased plasma levels of unbound phenytoin. In patients with hyperbilirubinemia, plasma levels of unbound phenytoin may also be elevated. It may be more useful to monitor unbound phenytoin concentrations in these patient populations, for optimal dosage adjustments (see [4.2 Recommended Dose and Dosage Adjustment, Renal or Hepatic Disease](#)).

Cases of acute hepatotoxicity, including infrequent cases of acute hepatic failure, have been reported with phenytoin. In some cases, these incidents have been associated with a hypersensitivity syndrome characterized by fever, skin eruptions, and lymphadenopathy, and usually occur within the first 2 months of treatment (see [7 WARNINGS AND PRECAUTIONS, Skin](#)). Other common manifestations include arthralgias, rash, jaundice, hepatomegaly,

elevated serum transaminase levels, leukocytosis, and eosinophilia. The clinical course of acute phenytoin hepatotoxicity ranges from prompt recovery to fatal outcomes. In these patients with acute hepatotoxicity, phenytoin should be immediately discontinued and not re-administered.

The liver is the chief site of biotransformation of phenytoin. Patients with impaired liver function, elderly patients, or those who are gravely ill may show early signs of toxicity (see [5 OVERDOSAGE](#)).

Toxic hepatitis, liver damage, and hypersensitivity syndrome have been reported and may, in rare cases be fatal (see [8 ADVERSE REACTIONS](#)).

## **Immune**

### **Hypersensitivity**

Phenytoin and other hydantoins (e.g. fosphenytoin) are contraindicated in patients who have experienced phenytoin hypersensitivity (see [2 CONTRAINDICATIONS](#)). If there is a history of hypersensitivity reactions to structurally similar drugs, such as carboxamides (e.g., carbamazepine), barbiturates, succinimides, and oxazolidinediones (e.g., trimethadione) in these patients or immediate family members, other alternatives should be considered. See also [7 WARNINGS AND PRECAUTIONS, Skin](#).

### **Angioedema**

Angioedema has been reported in patients treated with phenytoin. Phenytoin should be discontinued immediately if symptoms of angioedema, such as facial, perioral, or upper airway swelling occur.

### **Monitoring and Laboratory Tests**

Phenytoin serum level determinations may be necessary to achieve optimal dosage adjustments. See also [9.7 Drug-Laboratory Test Interactions](#).

## **Musculoskeletal**

Chronic use of phenytoin by patients with epilepsy has been associated with decreased bone mineral density (osteopenia, osteoporosis, osteomalacia) and bone fractures (see [8.5 Post-Market Adverse Reactions](#)).

Phenytoin and other anticonvulsants that have been shown to induce the CYP450 enzyme are thought to affect bone mineral metabolism indirectly by increasing the metabolism of Vitamin D3. This may lead to Vitamin D deficiency and heightened risk of osteomalacia, bone fractures, osteoporosis, hypocalcemia, and hypophosphatemia in chronically treated epileptic patients. Consideration should be given to monitoring with bone-related laboratory and radiological tests and initiating treatment plans, as appropriate.

## **Neurologic**

### **Central Nervous System**

Serum levels of phenytoin sustained above the optimal range may produce confusional states referred to as "delirium", "psychosis" or "encephalopathy", or rarely irreversible cerebellar

dysfunction and/or cerebellar atrophy. Accordingly, at the first sign of acute toxicity, serum drug level determinations are recommended. Dose reduction of phenytoin therapy is indicated if serum levels are excessive; if symptoms persist, termination of phenytoin therapy is recommended (see [10.3 Pharmacokinetics, Absorption](#), [7 WARNINGS AND PRECAUTIONS, General](#)).

## **Psychiatric**

### **Suicidal ideation and behaviour**

Suicidal ideation and behaviour have been reported in patients treated with antiepileptic agents in several indications. An FDA meta-analysis of randomized placebo-controlled trials, in which antiepileptic drugs were used for various indications, has shown a small increased risk of suicidal ideation and behaviour in patients treated with these drugs. The mechanism of this risk is not known.

All patients treated with antiepileptic drugs, irrespective of indication, should be monitored for signs of suicidal ideation and behaviour and appropriate treatment should be considered. Patients (and caregivers of patients) should be advised to seek medical advice should signs of suicidal ideation or behaviour emerge.

There were 43,892 patients treated in the placebo controlled clinical trials that were included in the meta-analysis. Approximately 75% of patients in these clinical trials were treated for indications other than epilepsy and, for the majority of non-epilepsy indications the treatment (antiepileptic drug or placebo) was administered as monotherapy. Patients with epilepsy represented approximately 25% of the total number of patients treated in the placebo controlled clinical trials and, for the majority of epilepsy patients, treatment (antiepileptic drug or placebo) was administered as adjunct to other antiepileptic agents (i.e., patients in both treatment arms were being treated with one or more antiepileptic drug). Therefore, the small increased risk of suicidal ideation and behaviour reported from the meta-analysis (0.43% for patients on antiepileptic drugs compared to 0.24% for patients on placebo) is based largely on patients that received monotherapy treatment (antiepileptic drug or placebo) for non-epilepsy indications. The study design does not allow an estimation of the risk of suicidal ideation and behaviour for patients with epilepsy that are taking antiepileptic drugs, due both to this population being the minority in the study, and the drug-placebo comparison in this population being confounded by the presence of adjunct antiepileptic drug treatment in both arms.

## **Renal**

In patients with renal impairment, plasma levels of unbound phenytoin are elevated. It may be useful to monitor unbound phenytoin concentrations in these patient populations, for optimal dosage adjustments (see [4.2 Recommended Dose and Dosage Adjustment, Renal or Hepatic Disease](#)).

## **Reproductive Health: Female and Male Potential**

- **Teratogenic Risk**

See [7.1.1 Pregnant Women, Risks to Fetus](#).

## **Skin**

### **Serious Dermatological Reactions**

Phenytoin can cause rare, severe cutaneous adverse reactions (SCARs) such as acute generalized exanthematous pustulosis (AGEP), exfoliative dermatitis, Steven-Johnson Syndrome (SJS), toxic epidermal necrolysis (TEN), and drug reaction with eosinophilia and systemic symptoms (DRESS), which can be fatal. Although serious skin reactions may occur without warning, patients should be alert for the occurrence of rash and other symptoms of hypersensitivity syndrome (HSS)/DRESS.

### **Hypersensitivity Syndrome / Drug Reaction with Eosinophilia and Systemic Symptoms**

Hypersensitivity Syndrome (HSS) or Drug rash with Eosinophilia and Systemic Symptoms (DRESS) has been reported in patients taking anticonvulsant drugs, including phenytoin. Some of these events have been fatal or life threatening.

HSS/DRESS typically, although not exclusively, presents with fever, rash, and/or lymphadenopathy, in association with other organ system involvement, such as hepatitis, nephritis, hematological abnormalities, myocarditis, myositis or pneumonitis. Initial symptoms may resemble an acute viral infection. Other common manifestations include arthralgias, jaundice, hepatomegaly, leukocytosis, and eosinophilia. The interval between first drug exposure and symptoms is usually 2-4 weeks but has been reported in individuals receiving anticonvulsants for 3 or more months. If such signs and symptoms occur, the patient should be evaluated immediately. Phenytoin should be discontinued (under clinical supervision) if an alternative aetiology for the signs and symptoms cannot be established.

Patients at higher risk for developing HSS/DRESS include Black patients, patients who have experienced HSS/DRESS in the past (with phenytoin or other anticonvulsant drugs), those with a family history of HSS/DRESS, and immune-suppressed patients. The syndrome is more severe in previously sensitized individuals.

### **Stevens-Johnson Syndrome, Acute Generalized Exanthematous Pustulosis and Toxic Epidermal Necrolysis**

Serious and sometimes fatal dermatologic reactions, including Toxic Epidermal Necrolysis (TEN) Acute Generalized Exanthematous Pustulosis (AGEP) and Stevens-Johnson Syndrome (SJS), have been reported with phenytoin. Although serious skin reactions may occur without warning, patients should be alert for the occurrence of rash and other symptoms of DRESS (see [Z WARNINGS AND PRECAUTIONS, Skin](#)). In countries with mainly Caucasian populations, these reactions are estimated to occur in 1 to 6 per 10,000 new users, but in some Asian countries (e.g., Taiwan, Malaysia and the Philippines) the risk is estimated to be much higher (see [Z WARNINGS AND PRECAUTIONS, Asian Ancestry and Allelic Variation in the HLA-B Genotyping](#)).

Literature reports suggest that the combination of phenytoin, cranial irradiation and the gradual reduction of corticosteroids may be associated with the development of erythema multiforme, and/or SJS, and/or TEN. In any of the above instances, caution should be exercised if using structurally similar compounds (e.g., barbiturates, succinimides, oxazolidinediones and other related compounds) in these same patients.

## **Treatment recommendations for dermatological reactions**

Phenytoin should be discontinued at the first sign of a rash, unless the rash is clearly not drug-related. If the rash is exfoliative, purpuric, or bullous or if lupus erythematosus or SJS or TEN is suspected, use of this drug should not be resumed and alternative therapy should be considered (see [8 ADVERSE REACTIONS](#)). If the rash is of a milder type (measles-like or scarlatiniform), therapy may be resumed after the rash has completely disappeared. If the rash recurs upon reinstitution of therapy, further phenytoin medication is contraindicated. The use of other anti-epileptic drugs associated with SJS/TEN should be avoided in patients who have shown severe dermatological reactions during phenytoin treatment. If a rash occurs and SJS or TEN is not suspected, the patient should be evaluated for signs and symptoms of DRESS (see [7 WARNINGS AND PRECAUTIONS, Skin](#)).

## **Asian Ancestry and Allelic Variation in the HLA-B Genotyping**

### **HLA-B\*1502**

In studies that included small samples of patients of Asian ancestry a strong association was found between the risk of developing SJS/TEN and the presence of HLA-B\*1502, an inherited allelic variant of the HLA-B gene. The HLA-B\*1502 allele is found almost exclusively in individuals with ancestry across broad areas of Asia<sup>1</sup>. Results of these studies suggest that the presence of the HLA-B\*1502 allele may be one of the risk factors for phenytoin-associated SJS/TEN in patients with Asian ancestry. Therefore, physicians should consider HLA-B \*1502 genotyping as a screening tool in these patients. Until further information is available, the use of phenytoin and other anti-epileptic drugs associated with SJS/TEN should also be avoided in patients who test positive for the HLA-B\*1502 allele.

### **Important Limitations of HLA-B\*1502 Genotyping**

HLA-B\*1502 genotyping as a screening tool has important limitations and must never substitute for appropriate clinical vigilance and patient management. Many HLA-B\*1502-positive Asian patients treated with phenytoin will not develop SJS/TEN, and these reactions can still occur infrequently in HLA-B\*1502-negative patients of any ethnicity. The role of other possible factors in the development of, and morbidity from, SJS/TEN, such as antiepileptic drug (AED) dose, compliance, concomitant medications, co-morbidities, and the level of dermatologic monitoring have not been studied.

In addition, it should be kept in mind that the majority of phenytoin treated patients who will experience SJS/TEN have this reaction within the first few months of treatment. This

---

<sup>1</sup> The following rates provide a rough estimate of the prevalence of HLA-B\*1502 in various populations. Greater than 15% of the population is reported positive in Hong Kong, Thailand, Malaysia, and parts of the Philippines, compared to about 10% in Taiwan and 4% in North China. South Asians, including Indians, appear to have intermediate prevalence of HLA-B\*1502, averaging 2 to 4%, but this may be higher in some groups. HLA-B\*1502 is present in < 1% of the population in Japan and Korea. HLA-B\*1502 is largely absent in individuals not of Asian origin (e.g., Caucasians, African-Americans, Hispanics, and Native Americans). The estimated prevalence rates have limitations due to the wide variability in rates that exist within ethnic groups, the difficulties in ascertaining ethnic ancestry and the likelihood of mixed ancestry.

information may be taken into consideration when deciding whether to screen genetically at-risk patients currently on phenytoin.

Should signs and symptoms suggest a severe skin reaction such as SJS or TEN, phenytoin should be withdrawn at once, under clinical supervision.

## **7.1 Special Populations**

### **7.1.1 Pregnant Women**

#### **Women of child-bearing potential**

Women of childbearing potential who are not planning a pregnancy should be advised regarding the use of effective contraception during treatment. Phenytoin may result in a failure of the therapeutic effect of hormonal contraceptives (see [9.4 Drug-Drug Interactions, Table 4](#)).

Anticonvulsant drugs should not be discontinued in patients in whom the drug is administered to prevent major seizures because of the strong possibility of precipitating status epilepticus with attendant hypoxia and threat to life. In individual cases where the severity and frequency of the seizure disorder are such that the removal of medication does not pose a serious threat to the patient, discontinuation of the drug may be considered prior to and during pregnancy although it cannot be said with any confidence that even minor seizures do not pose some hazard to the developing embryo or fetus. The prescribing physician will wish to weigh these considerations in treating and counseling epileptic women of childbearing potential.

#### **Pregnant Women**

**Risks to mother:** An increase in seizure frequency during pregnancy occurs in a high proportion of patients, because of altered phenytoin absorption or metabolism. Periodic measurement of serum phenytoin levels is particularly valuable in the management of a pregnant epileptic patient as a guide to an appropriate adjustment of dosage (see [10.3 Pharmacokinetics, Absorption](#)). However, postpartum restoration of the original dosage will probably be indicated.

**Risks to fetus:** Phenytoin crosses the placental barrier and may cause fetal harm when administered to a pregnant woman. Prenatal exposure to phenytoin may increase the risks for congenital malformations and other adverse development outcomes.

Increased frequencies of major malformations (such as orofacial clefts and cardiac defects), and abnormalities characteristic of fetal hydantoin syndrome, including dysmorphic skull and facial features, nail and digit hypoplasia, growth abnormalities (including microcephaly), and cognitive deficits, have been reported among children born to women with epilepsy who took phenytoin alone or in combination with other antiepileptic drugs during pregnancy.

**Risk to newborn:** A potentially life-threatening bleeding disorder related to decreased levels of vitamin K-dependent clotting factors may occur in newborns exposed to phenytoin in utero. This drug-induced condition can be prevented with vitamin K administration to the mother before delivery and to the neonate after birth.

There have been several reported cases of malignancies, including neuroblastoma, in children whose mothers received phenytoin during pregnancy.



Therefore, DILANTIN INFATABS, DILANTIN-30 SUSPENSION or DILANTIN-125 SUSPENSION should be used during pregnancy only if the potential benefit outweighs the potential risks. If this drug is used during pregnancy, or if the patient becomes pregnant while taking the drug, the patient should be apprised of the potential harm to the fetus from exposure to phenytoin.

Counsel pregnant women and women of childbearing potential about alternative therapeutic options.

### **7.1.2 Breast-feeding**

Infant breast feeding is not recommended for women taking phenytoin. Phenytoin is secreted into human milk. Limited observations in patients suggest that phenytoin concentration in breast milk is approximately one-third of the corresponding maternal plasma concentration.

### **7.1.4 Geriatrics**

**Geriatrics (> 65 years of age):** Phenytoin clearance is decreased slightly in elderly patients, and dosing requirements are highly variable (see [4.2 Recommended Dose and Dosage Adjustment, Geriatrics](#); and [10.3 Pharmacokinetics, Geriatrics](#)).

## **8 ADVERSE REACTIONS**

### **8.1 Adverse Reaction Overview**

The most common adverse reactions are nervous system reactions, including nystagmus, ataxia, slurred speech, decreased coordination, somnolence, and mental confusion.

### **8.5 Post-Market Adverse Reactions**

The following listing of adverse events is based on adverse events reported in clinical trials and/or spontaneous adverse event reports from post-marketing experience. All events are listed under Post-Market Adverse Reactions as the clinical trial data on which it was originally authorized is no longer available. Where a frequency cannot be estimated from the available data it is classified as 'not known'.

**Body as a whole:** Anaphylactic reaction and anaphylaxis.

**Central Nervous System:** The most common manifestations encountered with DILANTIN INFATABS, DILANTIN-30 SUSPENSION or DILANTIN-125 SUSPENSION therapy are referable to this system and are usually dose-related. These include nystagmus, ataxia, slurred speech, decreased coordination, and mental confusion. Cerebellar atrophy has been reported and appears more likely in settings of elevated phenytoin levels and/or long term phenytoin use (see [7 WARNINGS AND PRECAUTIONS, Neurologic](#)). Dizziness, vertigo, insomnia, transient nervousness, motor twitchings, headaches, paresthesia and somnolence have also been observed.

There have also been rare reports of phenytoin induced dyskinesias, including chorea, dystonia, tremor and asterixis, similar to those induced by phenothiazine and other neuroleptic drugs.

A predominantly sensory peripheral polyneuropathy has been observed in patients receiving long-term phenytoin therapy.



**Connective Tissue System:** Coarsening of the facial features, enlargement of the lips, gingival hyperplasia, and Peyronie's Disease.

**Gastrointestinal System:** Acute hepatic failure, toxic hepatitis, liver damage, vomiting, nausea, constipation (see [7 WARNINGS AND PRECAUTIONS, Hepatic/Biliary/Pancreatic](#)).

**Hematopoietic System:** Hematopoietic complications, some fatal, have occasionally been reported in association with administration of phenytoin. These have included thrombocytopenia, leukopenia, granulocytopenia, agranulocytosis, and pancytopenia with or without bone marrow suppression. Pure red cell aplasia has also been reported. While macrocytosis and megaloblastic anemia have occurred, these conditions usually respond to folic acid therapy. Lymphadenopathy, including benign lymph node hyperplasia, pseudolymphoma, lymphoma, and Hodgkin's Disease has been reported (see [7 WARNINGS AND PRECAUTIONS, Hematologic](#)).

**Immunologic:** Drug rash with eosinophilia and systemic symptoms (DRESS) (which may include, but is not limited to symptoms such as arthralgias, eosinophilia, fever, liver dysfunction, lymphadenopathy or rash), systemic lupus erythematosus, periarteritis nodosa, and immunoglobulin abnormalities. Angioedema has been reported. Several individual case reports have suggested that there may be an increased, although still rare, incidence of hypersensitivity reactions, including skin rash and hepatotoxicity, in Black patients (see [7 WARNINGS AND PRECAUTIONS, Skin](#)).

**Investigations:** Thyroid function test abnormal

**Musculoskeletal System:** Bone fractures and osteomalacia have been associated with chronic use of phenytoin by patients with epilepsy. Osteoporosis and other disorders of bone metabolism such as hypocalcemia, hypophosphatemia and decreased levels of Vitamin D metabolites have also been reported (see [7 WARNINGS AND PRECAUTIONS, Musculoskeletal](#)).

**Skin:** Dermatological manifestations sometimes accompanied by fever have included scarlatiniform or morbilliform rashes. A morbilliform rash (measles-like) is the most common; other types of dermatitis are seen more rarely. Urticaria has been reported. Other more serious forms which may be fatal have included bullous, exfoliative or purpuric dermatitis, lupus erythematosus, acute generalized exanthematous pustulosis, Stevens-Johnson syndrome and toxic epidermal necrolysis (see [7 WARNINGS AND PRECAUTIONS, Skin](#)). There have also been reports of hypertrichosis.

**Special Senses:** Taste perversion

## 9 DRUG INTERACTIONS

### 9.1 Serious Drug Interactions

#### Serious Drug Interactions

- Multiple drug interactions can occur due to extensive plasma protein binding, saturable metabolism and potent induction of hepatic enzymes. Monitor total and/or unbound serum phenytoin concentrations as appropriate to establish/maintain efficacy and safety.
- Delavirdine. See [9.4 Drug-Drug Interactions](#).

### 9.2 Drug Interactions Overview

Phenytoin is extensively bound to serum plasma proteins and is prone to competitive displacement. Phenytoin is metabolized by hepatic cytochrome (CYP) P450 enzymes CYP2C9 and CYP2C19 and is particularly susceptible to inhibitory drug interactions because it is subject to saturable metabolism. Inhibition of metabolism may produce significant increases in circulating phenytoin concentrations and enhance the risk of drug toxicity. See [5 OVERDOSAGE](#).

Phenytoin is a potent inducer of hepatic drug-metabolizing enzymes and may reduce the levels of drugs metabolized by these enzymes.

There are many drugs which may increase or decrease phenytoin levels or which phenytoin may affect. Serum level determinations for phenytoin are especially helpful when possible drug interactions are suspected.

### 9.3 Drug-Behavioural Interactions

**Alcohol:** Acute alcoholic intake may increase phenytoin serum levels while chronic alcoholic use may decrease serum levels.

### 9.4 Drug-Drug Interactions

The drugs listed in this table are based on either drug interaction case reports or studies, or potential interactions due to the expected magnitude and seriousness of the interaction (i.e., those identified as contraindicated).

The most commonly occurring drug interactions are listed below.

Table 1 summarizes the drug classes which may potentially increase phenytoin serum levels:

**Table 1. Drugs Which May Increase Phenytoin Serum Levels**

| Drug Classes                       | Drugs in each Class (such as)                 |
|------------------------------------|---|
| Alcohol (acute intake)             |   |
| Analgesic/anti-inflammatory agents | azapropazone<br>phenylbutazone<br>salicylates |

| Drug Classes                        | Drugs in each Class (such as)  |
|-------------------------------------|--|
| Anesthetics                         | halothane  |
| Antibacterial agents                | chloramphenicol<br>erythromycin<br>isoniazid<br>sulfadiazine<br>sulfamethizole<br>sulfamethoxazole-trimethoprim<br>sulfaphenazole<br>sulfisoxazole<br>sulfonamides |
| Anticonvulsants                     | felbamate<br>oxcarbazepine<br>sodium valproate<br>succinimides (e.g. ethosuximide)<br>valproate sodium<br>topiramate <sup>a</sup>                                  |
| Antifungal agents                   | amphotericin B<br>fluconazole<br>itraconazole<br>ketoconazole<br>miconazole<br>voriconazole  |
| Antineoplastic agents               | capecitabine<br>fluorouracil   |
| Benzodiazepines/psychotropic agents | chlordiazepoxide<br>diazepam<br>disulfiram<br>methylphenidate<br>trazodone<br>phenothiazine<br>viloxazine  |

| Drug Classes                                   | Drugs in each Class (such as)                                     |
|--|---|
| Calcium channel blockers/Cardiovascular agents | amiodarone<br>dicumarol<br>diltiazem<br>nifedipine<br>ticlopidine |
| H <sub>2</sub> -antagonists                    | cimetidine  |
| HMG-CoA reductase inhibitors                   | fluvastatin   |
| Hormones                                       | estrogens   |
| Immunosuppressant drugs                        | tacrolimus  |
| Oral hypoglycemic agents                       | tolbutamide   |
| Proton pump inhibitors                         | omeprazole  |
| Serotonin re-uptake inhibitors                 | fluoxetine<br>fluvoxamine<br>sertraline                           |

<sup>a</sup> Coadministration with topiramate reduces serum topiramate levels by 59%, and has the potential to increase phenytoin levels by 25% in some patients. The addition of topiramate therapy to phenytoin should be guided by clinical outcome.

Table 2 summarizes drugs which may decrease phenytoin serum levels.

**Table 2. Drugs Which May Decrease Phenytoin Serum Levels**

| Drug Classes                          | Drugs in each Class (such as)  |
|---------------------------------------|--|
| Alcohol (chronic intake)              |  |
| Antibacterial agents/Fluoroquinolones | ciprofloxacin<br>rifampin  |
| Anticonvulsants                       | carbamazepine<br>vigabatrin <sup>b</sup>                             |
| Antineoplastic agent                  | bleomycin<br>carboplatin<br>cisplatin<br>doxorubicin<br>methotrexate |
| Antiretrovirals                       | fosamprenavir<br>nelfinavir<br>ritonavir                             |

| Drug Classes          | Drugs in each Class (such as) |
|-----------------------|-------------------------------|
| Antiulcer agents      | sucralfate                    |
| Bronchodilators       | theophylline                  |
| Calcium preparation   | molindone hydrochloride       |
| Cardiovascular agents | reserpine                     |
| Folic acid            | folic acid                    |
| Hyperglycemic agents  | diazoxide                     |
| Protease inhibitors   | nelfinavir                    |
| St. John's Wort       | St. John's Wort               |

<sup>b</sup>Coadministration with vigabatrin reduces serum phenytoin levels by 20 to 30%. This may be clinically significant in some patients and may require dosage adjustment.

### **Molindone hydrochloride**

Molindone hydrochloride contains calcium ions which interfere with the absorption of phenytoin.

### **Calcium Preparations**

Ingestion times of phenytoin and antacid calcium preparations, including antacid preparations containing calcium should be staggered to prevent absorption problems.

### **Nelfinavir**

A pharmacokinetic interaction study between nelfinavir (1,250 mg twice a day) and phenytoin (300 mg once a day) administered orally showed that nelfinavir reduced AUC values of phenytoin (total) and free phenytoin by 29% and 28% (n = 12), respectively. The plasma concentration of nelfinavir was not changed (n = 15). Phenytoin concentration should be monitored during coadministration with nelfinavir, as nelfinavir may reduce phenytoin plasma concentration.

Table 3 summarizes drugs which may either increase or decrease phenytoin serum levels.

**Table 3. Drugs Which May Either Decrease or Increase Phenytoin Serum Levels**

| Drug Classes          | Drugs in each class (such as)   |
|-----------------------|---|
| Antibacterial agents  | ciprofloxacin   |
| Anticonvulsants       | carbamazepine<br>phenobarbital<br>sodium valproate <sup>a</sup><br>valproic acid <sup>a</sup> |
| Antineoplastic agents |   |

| Drug Classes        | Drugs in each class (such as)                  |
|---------------------|--|
| Psychotropic agents | chlordiazepoxide<br>diazepam<br>phenothiazines |

<sup>a</sup> Sodium valproate and valproic acid are similar medications. Elsewhere, the term valproate has been used to represent both these medications.

Similarly, the effect of phenytoin on carbamazepine, phenobarbital, valproic acid and sodium valproate serum levels is unpredictable.

Although not a true drug interaction, tricyclic antidepressants may precipitate seizures in susceptible patients and phenytoin dosage may need to be adjusted.

Table 4 summarizes drugs whose blood serum levels and/or effects may be altered by phenytoin.

**Table 4. Drugs Whose Blood Serum Levels and/or Effects May be Altered by Phenytoin**

| Drug Classes         | Drugs in each Class (such as)  |
|----------------------|--|
| Antibacterial agents | doxycycline<br>rifampin<br>tetracycline  |
| Anticoagulants       | warfarin<br>apixaban<br>dabigatran<br>edoxaban<br>rivaroxaban  |
| Anticonvulsants      | carbamazepine<br>lamotrigine <sup>a</sup><br>phenobarbital<br>sodium valproate <sup>c</sup><br>topiramate <sup>b</sup><br>valproic acid <sup>c</sup><br>lacosamide |
| Antifungal agents    | azoles<br>posaconazole<br>voriconazole   |

| Drug Classes  | Drugs in each Class (such as)  |
|---|--|
| Anthelmintics                                       | albendazole<br>praziquantel  |
| Antineoplastic agents                               | teniposide   |
| Antiplatelets                                       | ticagrelor   |
| Antiretrovirals                                     | delavirdine<br>efavirenz<br>fosamprenavir<br>indinavir<br>lopinavir/ritonavir<br>nelfinavir<br>ritonavir<br>saquinavir   |
| Bronchodilators                                     | theophylline   |
| Calcium channel blockers /<br>Cardiovascular agents | digitoxin<br>digoxin<br>disopyramide<br>mexiletine<br>nicardipine<br>nimodipine<br>nisoldipine<br>quinidine<br>verapamil |
| Corticosteroids                                     |  |
| Cyclosporine  |  |
| Diuretics   | furosemide   |
| HMG-CoA reductase inhibitors                        | atorvastatin<br>fluvastatin<br>simvastatin   |
| Hormones  | estrogens<br>oral contraceptives   |

| Drug Classes                        | Drugs in each Class (such as)  |
|-------------------------------------|--|
| Hyperglycemic agents                | diazoxide  |
| Immunosuppressant                   | cyclosporine   |
| Neuromuscular blocking agents       | alcuronium<br>cisatracurium<br>pancuronium<br>rocuronium<br>vecuronium |
| Opioid analgesics                   | methadone  |
| Oral hypoglycemic agents            | chlorpropamide<br>glyburide<br>tolbutamide                             |
| Psychotropic agents/Antidepressants | clozapine<br>paroxetine<br>quetiapine<br>sertraline                    |
| Vitamins                            | vitamin D  |
| Folic acid                          | folic acid   |

- <sup>a</sup> Coadministration with lamotrigine doubles the plasma clearance and reduces the elimination half life of lamotrigine by 50%. **This clinically important interaction requires dosage adjustment for lamotrigine.** There is no significant change in phenytoin plasma levels in the presence of lamotrigine.
- <sup>b</sup> Coadministration with topiramate reduces serum topiramate levels by 59%, and has the potential to increase phenytoin levels by 25% in some patients. **The addition of topiramate therapy to phenytoin should be guided by clinical outcome.**
- <sup>c</sup> Sodium valproate and valproic acid are similar medications. Elsewhere the term valproate has been used to represent both these medications.

### Delavirdine

Coadministration of DILANTIN with delavirdine is contraindicated due to potential for loss of virologic response and possible resistance to delavirdine or to the class of non-nucleoside reverse transcriptase inhibitors.

### Hyperammonemia with Concomitant Use of Valproate

Concomitant administration of phenytoin and valproate has been associated with an increased risk of valproate-associated hyperammonemia. Patients treated concomitantly with these two drugs should be monitored for signs and symptoms of hyperammonemia.



## **9.5 Drug-Food Interactions**

Literature reports suggest that patients who have received enteral feeding preparations and/or related nutritional supplements have lower than expected phenytoin plasma levels. It is therefore suggested that phenytoin not be administered concomitantly with an enteral feeding preparation.

More frequent serum phenytoin level monitoring may be necessary in these patients.

## **9.6 Drug-Herb Interactions**

St. John's Wort may decrease phenytoin serum levels.

## **9.7 Drug-Laboratory Test Interactions**

Phenytoin may cause decreased serum levels of protein-bound iodine (PBI). It may also produce lower than normal values for dexamethasone or metyrapone tests. Phenytoin may cause increased serum levels of glucose, alkaline phosphatase, and gamma glutamyl transpeptidase (GGT). Phenytoin may affect blood calcium and blood sugar metabolism tests.

# **10 CLINICAL PHARMACOLOGY**

## **10.1 Mechanism of Action**

DILANTIN INFATABS, DILANTIN-30 SUSPENSION and DILANTIN-125 SUSPENSION are anticonvulsant drugs which can be useful in the treatment of epilepsy. The primary site of action appears to be the motor cortex where spread of seizure activity is inhibited. Possibly by promoting sodium efflux from neurons, phenytoin tends to stabilize the threshold against hyperexcitability caused by excessive stimulation or environmental changes capable of reducing membrane sodium gradient. This includes the reduction of post-tetanic potentiation at synapses. Loss of post-tetanic potentiation prevents cortical seizure foci from detonating adjacent cortical areas. Phenytoin reduces the maximal activity of brain stem centers responsible for the tonic phase of tonic-clonic (grand mal) seizures.

## **10.3 Pharmacokinetics**

### **Absorption**

Phenytoin is a weak acid and has limited hydrosolubility, even in the intestine. The compound undergoes a slow and somewhat variable absorption after oral administration.

Clinical studies using DILANTIN INFATABS have shown an average plasma half-life of 14 hours with a range of 7 to 29 hours. The plasma half-life of phenytoin in man after oral administration of phenytoin oral suspension averages 22 hours, with a range of 7 to 42 hours. Steady-state therapeutic levels are achieved at least 7 to 10 days after initiation of therapy with recommended doses of 300 mg/day.

In most patients maintained at a steady dosage, stable phenytoin serum levels are achieved. There may be wide interpatient variability in phenytoin serum levels with equivalent dosages. Patients with unusually low levels may be noncompliant or hypermetabolizers of phenytoin. Unusually high levels result from liver disease, congenital enzyme deficiency or drug interactions

which result in metabolic interference. The patient with large variations in phenytoin serum levels, despite standard doses, presents a difficult clinical problem. Serum level determinations in such patients may be particularly helpful. As phenytoin is highly protein bound, free phenytoin levels may be altered in patients whose protein binding characteristics differ from normal.

When serum level determinations are necessary, they should be obtained at least 7 - 10 days after treatment initiation, dosage change, or addition or subtraction of another drug to the regimen so that equilibrium or steady-state will have been achieved. Trough levels obtained just prior to the patient's next scheduled dose provide information about clinically effective serum level range and confirm patient compliance. Peak drug levels, obtained at the time of expected peak concentration, indicate an individual's threshold for emergence of dose-related side effects. For DILANTIN INFATABS, DILANTIN-30 SUSPENSION and DILANTIN-125 SUSPENSION, peak serum levels occur 1½- 3 hours after administration.

Clinical studies show that chewed and unchewed DILANTIN INFATABS are bioequivalent, yield approximately equivalent plasma levels, and are more rapidly absorbed than DILANTIN 100 mg capsules (extended phenytoin capsules).

### **Distribution**

Phenytoin is distributed into cerebrospinal fluid, saliva, semen, gastrointestinal fluids, bile, and breast milk. The concentration of phenytoin in cerebrospinal fluid approximates the level of free phenytoin in plasma.

### **Metabolism**

Phenytoin is biotransformed in the liver by oxidative metabolism. The major pathway involves 4-hydroxylation, which accounts for 80% of all metabolites. Experiments in human liver microsomes have demonstrated that CYP2C9 plays the major role in the metabolism of phenytoin (90% of net intrinsic clearance), while CYP2C19 has a minor involvement in this process (10% of the net intrinsic clearance). In experiments with human liver microsomes, the relative contribution of CYP2C19 to phenytoin metabolism increased with increasing phenytoin concentrations, above the concentrations considered to be in the therapeutic range (see [4.1 Dosing Considerations](#)).

Pharmacokinetic data on six patients (age range: 22-64 years) receiving phenytoin monotherapy showed that ticlopidine (a CYP2C9 inhibitor), administered for two weeks, decreased plasma clearance of phenytoin.

In a human liver microsome study, phenylbutazone (a CYP2C9 inhibitor) decreased clearance of phenytoin (see [9 DRUG INTERACTIONS](#)).

### **Elimination**

Most of the drug is eliminated in the bile as inactive metabolites which are then reabsorbed from the intestinal tract and excreted in the urine partly with glomerular filtration but more importantly by tubular secretion. Less than 5% of phenytoin is excreted as the parent compound. Because phenytoin is hydroxylated in the liver by a cytochrome system which is saturable at high serum levels, small incremental doses may increase the half-life and produce very substantial increases in serum levels when these are in or above the upper therapeutic

range. The steady state level may be disproportionately increased, with resultant intoxication, from an increase in dosage of 10% or more.

### **Special Populations and Conditions**

#### **Geriatrics (> 65 years of age)**

Phenytoin clearance is decreased slightly in elderly patients (20% less in patients over 70 years of age relative to that in patients 20-30 years of age). Lower doses than the doses recommended for adults may be required when initiating treatment. Phenytoin dosing requirements are highly variable and must be individualized. (see [4.2 Recommended Dose and Dosage Adjustment, Geriatrics](#)).

### **11 STORAGE, STABILITY AND DISPOSAL**

DILANTIN INFATABS: Store between 15 - 30°C. Protect from light and moisture.

DILANTIN-30 SUSPENSION and DILANTIN-125 SUSPENSION: Store between 15 - 30°C. Protect from freezing and light.

### **12 SPECIAL HANDLING INSTRUCTIONS**

There are no special handling requirements for this drug product.

## PART II: SCIENTIFIC INFORMATION

### 13 PHARMACEUTICAL INFORMATION

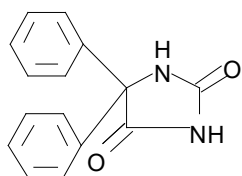
#### Drug Substance

Proper name: phenytoin

Chemical name: 5,5-diphenyl-2,4-imidazolidinedione

Molecular formula and molecular mass: C<sub>15</sub>H<sub>12</sub>N<sub>2</sub>O<sub>2</sub>, 252.27

Structural formula:



Physicochemical properties: phenytoin is related to the barbiturates in chemical structure, but has a 5-membered ring.

### 14 CLINICAL TRIALS

The clinical trial data on which the original indication was authorized is not available.

### 15 MICROBIOLOGY

No microbiological information is required for this drug product.

### 16 NON-CLINICAL TOXICOLOGY

No long-term animal studies have been performed to evaluate carcinogenic or mutagenic potential or whether DILANTIN INFATABS, DILANTIN-30 SUSPENSION and DILANTIN-125 SUSPENSION affects fertility in males or females.

## **PATIENT MEDICATION INFORMATION**

### **READ THIS FOR SAFE AND EFFECTIVE USE OF YOUR MEDICINE**

#### **PrDILANTIN® INFATABS**

##### **Phenytoin Chewable Tablets**

#### **PrDILANTIN®-30 SUSPENSION**

#### **PrDILANTIN®-125 SUSPENSION**

##### **Phenytoin Oral Suspension**

Read this carefully before you start taking **DILANTIN INFATABS, DILANTIN-30 SUSPENSION or DILANTIN-125 SUSPENSION** and each time you get a refill. This leaflet is a summary and will not tell you everything about this drug. Talk to your healthcare professional about your medical condition and treatment and ask if there is any new information about **DILANTIN INFATABS, DILANTIN-30 SUSPENSION or DILANTIN-125 SUSPENSION**.

#### **What are DILANTIN INFATABS, DILANTIN-30 SUSPENSION and DILANTIN-125 SUSPENSION used for?**

DILANTIN INFATABS, DILANTIN-30 SUSPENSION and DILANTIN-125 SUSPENSION are used to help:

- control certain types of seizures, called tonic-clonic (grand mal) seizures, and psychomotor (temporal lobe) seizures.

#### **How do DILANTIN INFATABS, DILANTIN-30 SUSPENSION and DILANTIN-125 SUSPENSION work?**

DILANTIN INFATABS, DILANTIN-30 SUSPENSION and DILANTIN-125 SUSPENSION belong to a group of medicines called anti-seizure medicines. It works by slowing down electrical impulses in the brain that cause seizures.

#### **What are the ingredients in DILANTIN INFATABS, DILANTIN-30 SUSPENSION and DILANTIN-125 SUSPENSION?**

Medicinal ingredients: Phenytoin.

Non-medicinal ingredients:

- **DILANTIN INFATABS:** alcohol, magnesium stearate, spearmint oil, sugar and talc.
- **DILANTIN-30 SUSPENSION and DILANTIN-125 SUSPENSION:** alcohol, banana oil, citric acid, glycerin, magnesium aluminium silicate, orange oil, polysorbate 40, sodium benzoate, sodium carboxymethylcellulose, sugar, vanillin, yellow #6 FD&C and water. DILANTIN-30 SUSPENSION also contains Red #2 FD&C.

**DILANTIN INFATABS, DILANTIN-30 SUSPENSION and DILANTIN-125 SUSPENSION come in the following dosage forms:**

- **DILANTIN INFATABS:** chewable tablets; 50 mg

- **DILANTIN-30 SUSPENSION:** oral suspension; 30 mg / 5 mL
- **DILANTIN-125 SUSPENSION:** oral suspension; 125 mg / 5 mL

DILANTIN INFATABS, DILANTIN-30 SUSPENSION and DILANTIN-125 SUSPENSION are also available as capsules.

**Do not use DILANTIN INFATABS, DILANTIN-30 SUSPENSION or DILANTIN-125 SUSPENSION if you/your child:**

- are allergic to phenytoin or any other ingredients in DILANTIN INFATABS, DILANTIN-30 SUSPENSION or DILANTIN-125 SUSPENSION.
- are allergic to other medicines of the hydantoin family, including fosphenytoin.
- take delavirdine (used to treat HIV infection).
- have a heart rhythm condition, such as slow heart rate (bradycardia), heart block, or certain other heart conditions.

**To help avoid side effects and ensure proper use, talk to your healthcare professional before you/your child take DILANTIN INFATABS, DILANTIN-30 SUSPENSION or DILANTIN-125 SUSPENSION. Talk about any health conditions or problems you/your child may have, including if you/your child:**

- are taking any other medications, supplements or other special treatments.
  - they may interact with DILANTIN INFATABS, DILANTIN-30 SUSPENSION and DILANTIN-125 SUSPENSION, and this can change how well they or DILANTIN INFATABS, DILANTIN-30 SUSPENSION and DILANTIN-125 SUSPENSION work.
  - they include prescription or non-prescription medications, dietary supplements (e.g., vitamins), herbal supplements, nutritional drinks, and enteral feeding preparations.
- have ever had an allergic rash while taking phenytoin or any other anti-seizure medicine.
- have a personal or family history of severe allergic reaction to phenytoin or any other anti-seizure medicines.
  - symptoms can include fever, rash, swollen lymph gland, and liver problems (seen as yellowing of skin and the whites of the eyes)
- drink alcohol occasionally or regularly.
- are 65 years of age or older.
- are female and:
  - are breastfeeding or plan to breastfeed.
  - are pregnant or plan to become pregnant.
  - are using hormonal birth control, such as the birth control pill.
- are of Asian and/or Black descent. You or your child may be at a higher risk of developing serious skin reactions during treatment with DILANTIN INFATABS, DILANTIN-30 SUSPENSION or DILANTIN-125 SUSPENSION.
- have or have had any of the following diseases or conditions:
  - depression, mood problems, or suicidal thoughts or behaviours.
  - diabetes.
  - heart problems, including slow or fast heart rate, or past heart attack.
  - liver or kidney problems.

- low levels of albumin or high levels of bilirubin in the blood.
- porphyria (a condition that affects the nervous system and skin). DILANTIN INFATABS, DILANTIN-30 SUSPENSION and DILANTIN-125 SUSPENSION can worsen your condition.
- immune system problems, such as immune suppression or compromise.
- are having radiation therapy for the brain and take corticosteroids (medicines used to treat inflammation).
- a medical condition (such as surgery) that prevents you from taking DILANTIN INFATABS, DILANTIN-30 SUSPENSION and DILANTIN-125 SUSPENSION orally.

**Other warnings you should know about:**

**Do not stop your treatment with DILANTIN INFATABS, DILANTIN-30 SUSPENSION or DILANTIN-125 SUSPENSION without first checking with your healthcare professional. This could lead to a sudden worsening of your seizures.**

**Pregnancy, birth control and breastfeeding:**

- Avoid becoming pregnant while you are on DILANTIN INFATABS, DILANTIN-30 SUSPENSION and DILANTIN-125 SUSPENSION. If you become pregnant while taking DILANTIN INFATABS, DILANTIN-30 SUSPENSION and DILANTIN-125 SUSPENSION, your seizures may become worse. Your healthcare professional may change your dose of DILANTIN INFATABS, DILANTIN-30 SUSPENSION or DILANTIN-125 SUSPENSION.
- If you take DILANTIN INFATABS, DILANTIN-30 SUSPENSION or DILANTIN-125 SUSPENSION during pregnancy, your baby is at risk for serious birth defects, and cognitive disabilities. Your baby is also at risk for bleeding problems right after birth.
- If you are pregnant or able to get pregnant, talk to your healthcare professional about using other treatments instead of DILANTIN INFATABS, DILANTIN-30 SUSPENSION or DILANTIN-125 SUSPENSION. If the decision is made to use DILANTIN INFATABS, DILANTIN-30 SUSPENSION or DILANTIN-125 SUSPENSION, you should use effective birth control (contraception) during your treatment. If you are using hormonal birth control, it might not work with DILANTIN INFATABS, DILANTIN-30 SUSPENSION and DILANTIN-125 SUSPENSION. Talk to your healthcare professional about the best kind of birth control to use while you are taking DILANTIN INFATABS, DILANTIN-30 SUSPENSION or DILANTIN-125 SUSPENSION.
- Tell your healthcare professional right away if you become pregnant or think you are pregnant during treatment with DILANTIN INFATABS, DILANTIN-30 SUSPENSION or DILANTIN-125 SUSPENSION. You and your healthcare professional should decide if you will continue to take DILANTIN INFATABS, DILANTIN-30 SUSPENSION or DILANTIN-125 SUSPENSION while you are pregnant.
- **Pregnancy Registry:** If you become pregnant while taking DILANTIN INFATABS, DILANTIN-30 SUSPENSION or DILANTIN-125 SUSPENSION, talk to your healthcare professional about registering with the North American Antiepileptic Drug Pregnancy Registry. You can enroll in this registry by calling 1-888-233-2334. The purpose of this registry is to collect information about the safety of antiepileptic medicines during

pregnancy. Information about the registry can also be found at the website: <http://www.aedpregnancyregistry.org/>.

- DILANTIN INFATABS, DILANTIN-30 SUSPENSION and DILANTIN-125 SUSPENSION passes into breast milk and may harm your baby. Do not breastfeed during treatment with DILANTIN INFATABS, DILANTIN-30 SUSPENSION or DILANTIN-125 SUSPENSION. Talk to your healthcare professional about the best way to feed your baby during this time.

**Driving or using machines:** DILANTIN INFATABS, DILANTIN-30 SUSPENSION and DILANTIN-125 SUSPENSION may make you feel dizzy, drowsy and affect your coordination. Avoid driving, using machinery, or doing activities that requires you to be alert until you know how DILANTIN INFATABS, DILANTIN-30 SUSPENSION and DILANTIN-125 SUSPENSION affect you.

**Alcohol:** Do not drink alcohol while taking DILANTIN INFATABS, DILANTIN-30 SUSPENSION or DILANTIN-125 SUSPENSION without first talking to your healthcare professional. Drinking alcohol while taking DILANTIN INFATABS, DILANTIN-30 SUSPENSION or DILANTIN-125 SUSPENSION may change your blood levels of phenytoin, which can cause serious side effects.

**Check-ups and testing:**

- Your healthcare professional may ask you to do a genetic test before you take DILANTIN INFATABS, DILANTIN-30 SUSPENSION or DILANTIN-125 SUSPENSION. This test will determine if you have a high risk of experiencing serious skin reactions if you are given DILANTIN INFATABS, DILANTIN-30 SUSPENSION or DILANTIN-125 SUSPENSION.
- You will have regular visits with your healthcare professional while you are taking DILANTIN INFATABS, DILANTIN-30 SUSPENSION or DILANTIN-125 SUSPENSION to monitor your health. They will:
  - do blood tests to monitor the amount of phenytoin in the body.
  - do scans to check your bone health.
  - talk to you about how you are feeling, and if you have suicidal thoughts and behaviours.
- DILANTIN INFATABS, DILANTIN-30 SUSPENSION and DILANTIN-125 SUSPENSION can cause abnormal blood test results. Your healthcare professional will decide when to perform blood tests and will interpret the results.

**DILANTIN INFATABS, DILANTIN-30 SUSPENSION and DILANTIN-125 SUSPENSION can cause serious side effects, including:**

- **Suicidal thoughts and behaviour changes:** This medicine may cause some people to be agitated, irritable, or display other unusual behaviours. It may also cause some people to have suicidal thoughts and tendencies or to become more depressed. You may find it helpful to tell a relative or close friend you are taking DILANTIN INFATABS, DILANTIN-30 SUSPENSION or DILANTIN-125 SUSPENSION. Ask them to read this leaflet. You might ask them to tell you if they:
  - think your depression is getting worse, or
  - are worried about changes in your behaviour.



If you have thoughts of harming or killing yourself or others at any time, tell your healthcare professional or go to a hospital **right away**. Close observation by a healthcare professional is necessary in this situation.

- **Serious skin reactions:** Serious allergic reactions can be caused by anti-seizure medicines, often involving a skin reaction. These may occur shortly after starting treatment, or several months later. Get help **right away** if you/your child develop a skin rash, regardless of its severity, either alone or with a combination of the following symptoms:
  - any other serious skin reaction such as blistering or peeling of the mouth, nose, eyes or genitals,
  - fever,
  - swollen glands,
  - flu-like feeling,
  - swelling of the face and/or legs,
  - problems related to the liver, kidneys, heart, lungs or other organs.
- **Bone problems (including osteoporosis, osteopenia, osteomalacia):** If you have taken anti-seizure medicines for a long time, it can lead to bone problems. This includes painful and weakened or brittle bones, and possibly bone fractures.
- **Gingival hyperplasia** (overgrowth of gum tissue around the teeth): Talk to your healthcare professional about the best way to care for your teeth, gums, and mouth during your treatment with DILANTIN INFATABS, DILANTIN-30 SUSPENSION or DILANTIN-125 SUSPENSION. It is very important that you care for your mouth properly to decrease the risk of gum damage.

See the **Serious side effects and what to do about them** table for more information on these and other serious side effects.

**Tell your healthcare professional about all the medicines you/your child take, including any drugs, vitamins, minerals, natural supplements or alternative medicines.**

#### Serious Drug Interactions

DILANTIN INFATABS, DILANTIN-30 SUSPENSION and DILANTIN-125 SUSPENSION may interact with a number of other medicines. Your healthcare professional will monitor you while you are taking DILANTIN INFATABS, DILANTIN-30 SUSPENSION and DILANTIN-125 SUSPENSION to ensure you are taking the dose that is right for you.

DILANTIN INFATABS, DILANTIN-30 SUSPENSION and DILANTIN-125 SUSPENSION must not be taken with delavirdine, used to treat HIV infection.

**The following may interact with DILANTIN INFATABS, DILANTIN-30 SUSPENSION and DILANTIN-125 SUSPENSION:**

- medicines used to treat or prevent:
  - seizures or epilepsy (other than DILANTIN INFATABS, DILANTIN-30 SUSPENSION and DILANTIN-125 SUSPENSION)

- bacterial, fungal and parasitic infections
- HIV infection
- cancer
- high blood pressure or certain heart conditions
- high blood cholesterol
- high blood sugar
- blood clots (anticoagulants)
- depression and other psychological conditions
- anxiety or alcohol withdrawal
- pain and inflammation
- excess stomach acid or ulcers,
- medicines used to suppress your immune system, and
- medicines used as a muscle relaxant for intubation or surgery
- these medicines:
  - birth control pills and other birth control methods that use hormones
  - theophylline, used to treat asthma or other breathing problems
  - furosemide, used to lower extra fluid levels
  - halothane, used for general anesthesia
  - methadone, used to treat pain and opioid dependence
  - corticosteroids, used to treat inflammation
  - diazoxide, used to treat low blood sugar
- other supplements:
  - St. John’s Wort, a herbal remedy
  - vitamin D, vitamin B9 (folic acid)
  - tube feeding preparations and related nutritional drinks or supplements
- alcohol.

This is not a complete list.

### **How to take DILANTIN INFATABS, DILANTIN-30 SUSPENSION, and DILANTIN-125 SUSPENSION:**

- Always take DILANTIN INFATABS, DILANTIN-30 SUSPENSION and DILANTIN-125 SUSPENSION exactly as your healthcare professional has told you to. They will decide on the dose that is right for you/your child. Never increase or decrease your dose without talking to your healthcare professional.
- Do not stop taking DILANTIN INFATABS, DILANTIN-30 SUSPENSION or DILANTIN-125 SUSPENSION without talking to your healthcare professional. Stopping DILANTIN INFATABS, DILANTIN-30 SUSPENSION or DILANTIN-125 SUSPENSION suddenly can cause serious problems, including seizures that will not stop. Your healthcare professional will tell you if and when you/your child can stop taking this medicine.
- DILANTIN INFATABS, DILANTIN-30 SUSPENSION and DILANTIN-125 SUSPENSION should not be taken once a day. It should be taken in 2 or more equally divided doses a day.

## Usual dose:

### **DILANTIN INFATABS**

#### **Adults:**

- **Usual initial dose:** 300 mg a day, divided into 3 doses (two 50 mg chewable tablets, three times a day). Your dose may be adjusted according to the effect it has, and to the level of medicine in your blood.
- **Usual dose:** 400 - 600 mg total a day, in divided doses. Your healthcare professional may adjust your dose if necessary.

#### **Children (below 18 years of age)**

- Your child's healthcare professional will determine the right dose based on your child's weight. Follow their instructions carefully.
- **Usual initial dose:** A total of 5 mg/kg/day (5 mg per day for every kg they weigh), to be divided and given in 2 or 3 equal doses. Your child's dose may be adjusted according to the effect it has, and to the level of medicine in their blood. The maximum dose is 300 mg (total) a day.
- **Usual dose:** 4 to 8 mg/kg/day, in divided doses. Children over 6 years old may require the minimum adult dose (300 mg/day).
- If the daily dosage cannot be divided equally, the larger dose should be given at bedtime.

### **DILANTIN-30 SUSPENSION and DILANTIN-125 SUSPENSION**

#### **Adults:**

- **Usual initial dose:** 5 mL of DILANTIN-125 SUSPENSION, three times a day. Your dose may be adjusted according to the effect it has, and to the level of medicine in your blood.
- **Usual dose:** 25 mL of DILANTIN-125 SUSPENSION in divided doses. Your healthcare professional may adjust your dose if necessary.

#### **Children (below 18 years of age)**

- Your child's healthcare professional will determine the right dose based on your child's weight. Follow their instructions carefully.
- **Usual initial dose:** A total of 5 mg/kg/day (5 mg per day for every kg they weigh), to be divided and given in 2 or 3 equal doses. Your child's dose may be adjusted according to the effect it has, and to the level of medicine in their blood. The maximum dose is 300 mg (total) a day.
- **Usual dose:** 4 to 8 mg/kg/day, in divided doses. Children over 6 years old may require the minimum adult dose (300 mg/day).
- If the daily dosage cannot be divided equally, the larger dose should be given at bedtime.

**Overdose:**

Signs of an overdose with DILANTIN INFATABS, DILANTIN-30 SUSPENSION and DILANTIN-125 SUSPENSION include:

- blurred vision, involuntary eye movements (side-to-side, up and down, circular motion),
- lack of muscle control or coordination, shaking (tremors), overactive reflexes,
- low blood pressure, slow heart rate, poor blood circulation, heart suddenly stops beating (cardiac arrest),
- feeling sleepy or tired, lack of energy,
- slurred or slow speech,
- nausea or vomiting,
- slow and ineffective breathing,
- coma.

If you think you, or a person you are caring for, have taken too much DILANTIN INFATABS, DILANTIN-30 SUSPENSION or DILANTIN-125 SUSPENSION, contact a healthcare professional, hospital emergency department, or regional poison control centre immediately, even if there are no symptoms.

**Missed Dose:**

If you/your child miss a dose, take it as soon as you remember. However, if it is almost time for the next dose, skip the missed dose and take your next dose as scheduled. Do not take a double dose to make up for the missed dose.

**What are possible side effects from using DILANTIN INFATABS, DILANTIN-30 SUSPENSION and DILANTIN-125 SUSPENSION?**

These are not all the possible side effects you may have when taking DILANTIN INFATABS, DILANTIN-30 SUSPENSION and DILANTIN-125 SUSPENSION. If you experience any side effects not listed here, tell your healthcare professional.

Side effects may include:

- high blood sugar. If you have diabetes, closely monitor your blood sugar while taking DILANTIN INFATABS, DILANTIN-30 SUSPENSION and DILANTIN-125 SUSPENSION.
- spinning or dizziness (vertigo)
- trouble falling asleep, or feeling sleepy
- nausea or vomiting, constipation
- nervousness
- headache
- burning or prickling sensation on the skin (sometimes called “pins and needles”)
- changes in facial features
- additional body and facial hair
- change in tastes

| Serious side effects and what to do about them   |                                      |              |                            |
|--|--------------------------------------|--------------|----------------------------|
| Symptom / effect   | Talk to your healthcare professional |              | Get immediate medical help |
|  | Only if severe                       | In all cases |                            |
| <b>COMMON</b>  |                                      |              |                            |
| <b>Gingival hyperplasia</b><br>(overgrowth of gum tissue around the teeth): tender gums, inflammation, pain, bad breath, plaque buildup on teeth, gums covering the teeth  |                                      | ✓            |                            |
| <b>Nervous system problems:</b><br>may include unusual eye movements, slurred speech, decreased coordination, feeling confused.  |                                      | ✓            |                            |
| <b>UNCOMMON</b>  |                                      |              |                            |
| <b>Anemias</b> (problems with the blood and immune system): bruising, fever, looking pale, severe sore throat, tiredness, lack of energy, decreased exercise tolerance   |                                      | ✓            |                            |
| <b>Angioedema and severe allergic reactions:</b> symptoms may include swelling of the face, eyes, lips or tongue, difficulty swallowing, wheezing, hives and generalized itching, rash, fever, abdominal cramps, chest discomfort or tightness, difficulty breathing, unconsciousness. |                                      |              | ✓                          |
| <b>Liver problems (including hepatitis, liver failure or damage):</b> yellowing of your skin and eyes (jaundice), right upper stomach area pain or swelling, nausea or vomiting, unusual dark urine, unusual tiredness, loss of appetite (anorexia)                                    |                                      |              | ✓                          |

| Serious side effects and what to do about them  |                                      |              |                            |
|---|--------------------------------------|--------------|----------------------------|
| Symptom / effect  | Talk to your healthcare professional |              | Get immediate medical help |
|   | Only if severe                       | In all cases |                            |
| <b>Mental changes:</b> feeling confused or disoriented (delirium), seeing, hearing or believing things that aren't real (psychosis).  |                                      | ✓            |                            |
| <b>Seizures (fits):</b> uncontrollable shaking  |                                      | ✓            |                            |
| <b>Serious skin reactions:</b> any combination of fever, severe rash, swollen lymph glands. May involve flu-like feeling, blisters and peeling skin that may start in and around the mouth, nose, eyes and genitals and spread to other areas of the body, swelling of face and/or legs. May also involve problems related to the liver, kidneys, heart, lungs or other organs. |                                      |              | ✓                          |
| <b>Skin reactions</b> (rashes, eruptions, skin blistering)  |                                      |              | ✓                          |
| <b>Suicidal thoughts or behaviour changes:</b> unusual behaviours, depression, worsening of depression, leading to thoughts of self-harm or suicide   |                                      |              | ✓                          |
| <b>UNKNOWN FREQUENCY</b>  |                                      |              |                            |
| <b>Bone problems (including osteoporosis, osteopenia, osteomalacia):</b> bone pain, muscle weakness, difficulty walking, bone fractures   |                                      | ✓            |                            |
| <b>Heart problems:</b> unusual heart rate (slow, fast or irregular), dizziness, tiredness, shortness of breath, chest pain  |                                      |              | ✓                          |

If you have a troublesome symptom or side effect that is not listed here or becomes bad

enough to interfere with your daily activities, tell your healthcare professional.

### **Reporting Side Effects**

You can report any suspected side effects associated with the use of health products to Health Canada by:

- Visiting the Web page on Adverse Reaction Reporting (<https://www.canada.ca/en/health-canada/services/drugs-health-products/medeffect-canada.html>) for information on how to report online, by mail or by fax; or
- Calling toll-free at 1-866-234-2345.

*NOTE: Contact your health professional if you need information about how to manage your side effects. The Canada Vigilance Program does not provide medical advice.*

### **Storage:**

**DILANTIN INFATABS:** Store between 15 - 30°C. Protect from light and moisture.

**DILANTIN-30 SUSPENSION and DILANTIN-125 SUSPENSION:** Store between 15 - 30°C. Protect from freezing and light.

Keep DILANTIN INFATABS, DILANTIN-30 SUSPENSION and DILANTIN-125 SUSPENSION out of reach and sight of children.

### **If you want more information about DILANTIN INFATABS, DILANTIN-30 SUSPENSION and DILANTIN-125 SUSPENSION:**

- Talk to your healthcare professional
- Find the full product monograph that is prepared for healthcare professionals and includes this Patient Medication Information by visiting the Health Canada website: (<https://www.canada.ca/en/health-canada/services/drugs-health-products/drug-products/drug-product-database.html>); the manufacturer's website <http://www.pfizer.ca>, or by calling 1-800-463-6001.

This leaflet was prepared by Upjohn Canada ULC.

Last Revised March 31, 2022

Upjohn Canada ULC  
Kirkland, Québec H9J 2M5

® Viatris Specialty LLC  
Upjohn Canada ULC, Licensee  
© Upjohn Canada ULC, 2022